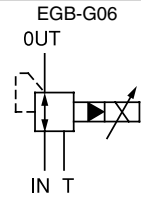
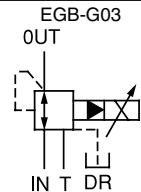


### Electro-hydraulic Proportional Relief and Reducing Valve

50 to 100 ℓ /min  
0.3 to 25MPa



### Features

This valve combines a compact, high-performance electro-hydraulic pilot relief valve, and a reducing and relief valve for low-pressure control of pressure within a hydraulic system in proportion to input current.

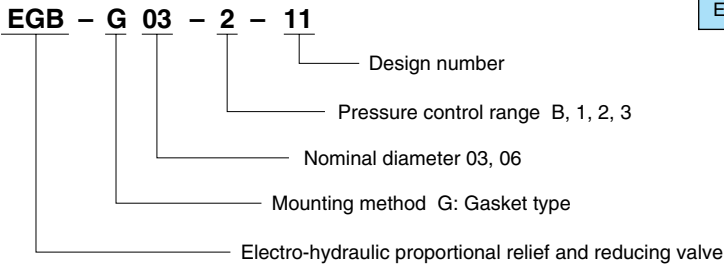
Since this valve includes a relief function, OUT side pressure can be maintained at a virtually fixed level, even when the valve's OUT side is used as reaction force. This valve also provides outstanding response as pressure drops.

### Specifications

Item	Model No.	EGB-G03*-11	EGB-G06*-11
Maximum Operating Pressure MPa {kgf/cm <sup>2</sup> }		25{255}	
Maximum Flow Rate ℓ /min		50	100
Pressure Control Range MPa {kgf/cm <sup>2</sup> }		B : 0.3 to 2.5{3.1 to 25.5} (Note 1) 1 : 0.7 to 7 {7.1 to 71 } 2 : 1.0 to 14 {10 to 143 } 3 : 1.5 to 21 {15.3 to 214 }	
Rated Current mA		800	
Coil Resistance Ω		20 (20°C)	
Hysteresis %		3 max. (Note 2)	
Weight kg		5.5	7.8

Note) 1.G03 type only Rated flow rate: 20 ℓ /min  
2.Value when a Nachi-Fujikoshi special amplifier is used (with dithering).

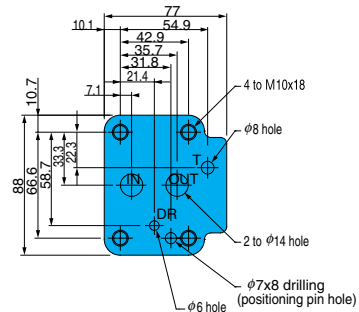
### Understanding Model Numbers



Model No.	Bolt Size	Q'ty	Tightening Torque N·m{kgf·cm}
EGB-G03	M10 × 75 ℓ	4	45 to 55{460 to 560}
EGB-G06	M10 × 85 ℓ	4	45 to 55{460 to 560}

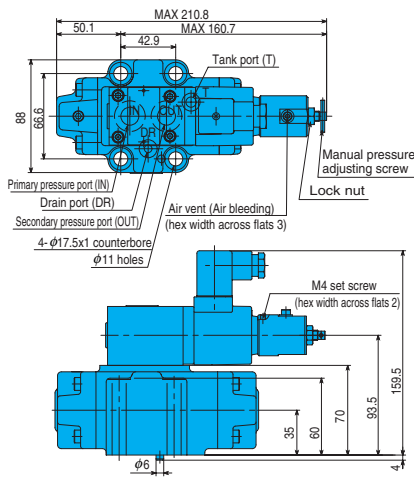
6] Use an operating fluid that conforms to the both of the following. Oil temperature: -20 to 70°C  
Viscosity: 12 to 400mm<sup>2</sup>/s The recommended viscosity range is 15 to 60mm<sup>2</sup>/s.

### Mounding Gasket Dimensions EGB-G03\*-11

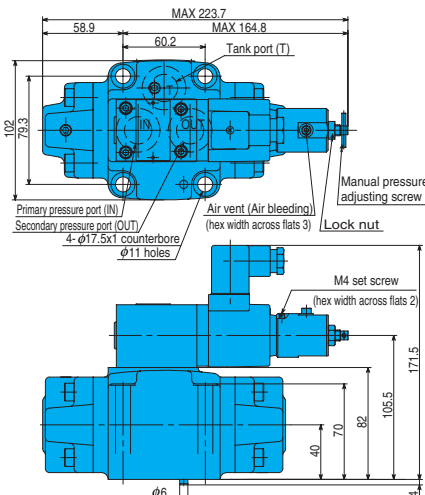


### Installation Dimension Drawings

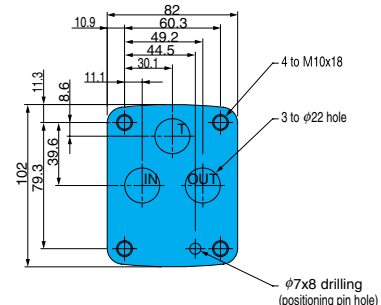
EGB-G03\*-11



EGB-G06\*-11



### Mounding Gasket Dimensions EGB-G06\*-11

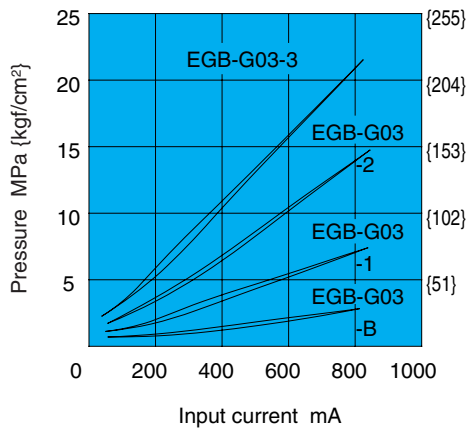


## Performance Curves

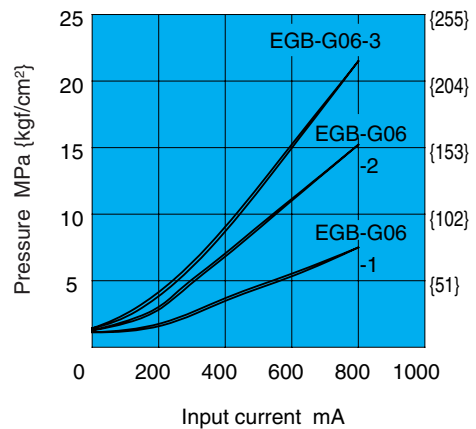
Hydraulic Operating Fluid Viscosity 32mm<sup>2</sup>/s

Input Current – Pressure Characteristics

EGB-G03

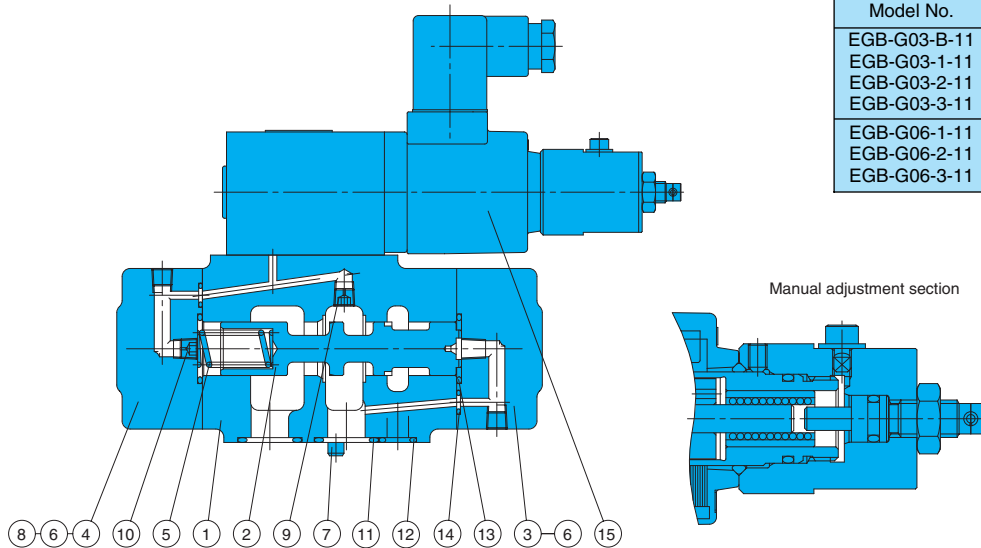


EGB-G06



## Cross-sectional Drawing

EGB-G\*\*-\*-11



EGB Valve Built-in Pilot Relief Valve List

Model No.	Built-in Pilot Relief Valve
EGB-G03-B-11	EPR-G01-B-0000-12
EGB-G03-1-11	1-0013-12
EGB-G03-2-11	2-0012-12
EGB-G03-3-11	3-0011-12
EGB-G06-1-11	EPR-G01-1-0013-12
EGB-G06-2-11	2-0012-12
EGB-G06-3-11	3-0012-12

Seal Part List (Kit Model Number JGS-\*\*\*)

Part No.	Part Name	EGB-G03-*-11		EGB-G06-*-11	
		Part Number	Q'ty	Part Number	Q'ty
11	O-ring	1B-P20	2	1B-P26	3
12	O-ring	1B-P10A	2	-	-
13	O-ring	1B-P22	2	1B-G30	2
14	O-ring	1B-P6	2	1B-P6	2

- Note) 1.O-ring 1B-\*\* refers to JIS B2401-1B-\*\*.  
 2.For the \*\* part of the kit number, specify the valve size (G03, G06).  
 3.EPR-G01 pilot valve seal is available separately. See page I-3 for more information.

Part No.	Part Name
1	Body
2	Piston
3	Cover
4	Cover
5	Spring
6	Screw
7	Pin
8	Pin
9	Choke
10	Choke
11	O-ring
12	O-ring
13	O-ring
14	O-ring
15	Pilot relief valve

- Note)  
 Coil model number JD64-D2